

Coaxial Low Pass Filter

BLP-10.7-75+ BLP-10.7-75

75Ω DC to 11 MHz

Maximum Ratings

Operating Temperature	-55°C to 100°C
Storage Temperature	-55°C to 100°C
RF Power Input	0.5W max.

Permanent damage may occur if any of these limits are exceeded.

Features

- rugged shielded case
- other standard and custom BLP models available with wide selection of fco

Applications

- test equipment
- lab use
- video equipment



CASE STYLE: FF55

Connectors	Model	Price	Qty.
BNC	BLP-10.7-75(+)	\$33.95 ea.	(1-9)

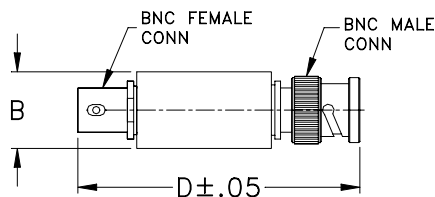
+ RoHS compliant in accordance with EU Directive (2002/95/EC)

The +Suffix identifies RoHS Compliance. See our web site for RoHS Compliance methodologies and qualifications.

Low Pass Filter Electrical Specifications

PASSBAND (MHz)	fco (MHz) Nom.	STOPBAND (MHz)		VSWR (:1)	
		(loss > 20 dB)	(loss > 40 dB)	Passband Typ.	Stopband Typ.
DC-11	14	19-24	24-200	1.7	18

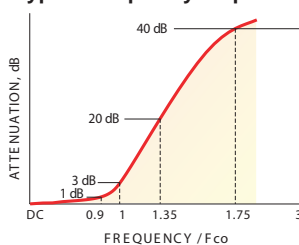
Outline Drawing



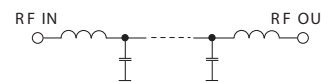
Outline Dimensions (inch/mm)

B	D	wt
.54	2.59	grams
13.72	65.79	40.0

typical frequency response

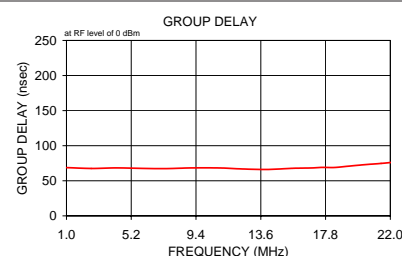
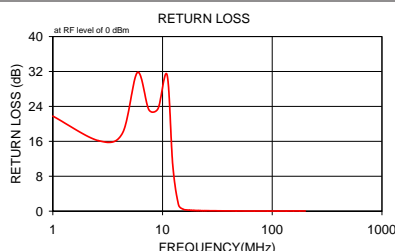
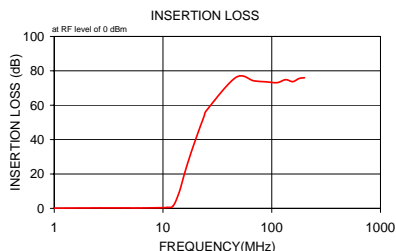


electrical schematic



Typical Performance Data

Frequency (MHz)	Insertion Loss (dB)		Return Loss (dB)	Frequency (MHz)	Group Delay (nsec)
	\bar{x}	σ			
1.00	0.11	0.00	21.77	1.00	68.81
2.60	0.23	0.01	16.16	1.12	67.57
4.30	0.24	0.01	17.81	1.24	68.38
5.90	0.22	0.01	31.76	1.38	67.69
7.50	0.30	0.01	23.25	1.54	67.33
9.10	0.37	0.01	23.48	1.71	68.36
11.00	0.52	0.02	31.19	1.90	68.28
12.40	1.45	0.12	10.50	2.11	66.85
14.00	8.90	0.31	1.41	2.35	66.16
15.60	19.20	0.26	0.40	2.61	67.72
16.30	23.22	0.24	0.31	2.90	68.04
17.00	26.93	0.23	0.26	3.22	68.32
17.60	29.90	0.23	0.23	3.58	69.11
18.30	33.15	0.21	0.20	3.98	68.90
19.00	36.20	0.22	0.18	4.42	70.18
19.70	39.07	0.23	0.17	4.91	71.73
20.60	42.53	0.28	0.15	5.46	73.45
21.40	45.54	0.27	0.14	6.07	74.72
22.30	48.58	0.35	0.13	6.75	76.69
23.10	51.17	0.36	0.12	7.50	78.91
24.00	53.98	0.26	0.12	8.33	82.64
24.90	56.67	0.48	0.11	9.26	88.48
46.80	76.14	1.09	0.05	10.29	99.26
68.70	74.18	1.65	0.04	11.00	111.04
90.60	73.55	1.76	0.04	12.82	151.87
112.50	73.13	1.14	0.04	14.00	113.88
134.30	74.86	0.92	0.04	15.97	48.35
156.20	73.72	1.40	0.05	17.75	28.43
178.10	75.53	2.93	0.05	19.00	21.51
200.00	75.97	4.06	0.05	22.00	11.34



P.O. Box 350166, Brooklyn, New York 11235-0003 (718) 934-4500 Fax (718) 332-4661 The Design Engineers Search Engine Provides ACTUAL Data Instantly at minicircuits.com

IF/RF MICROWAVE COMPONENTS

For detailed performance specs & shopping online see web site

Notes: 1. Performance and quality attributes and conditions not expressly stated in this specification sheet are intended to be excluded and do not form a part of this specification sheet. 2. Electrical specifications and performance data contained herein are based on Mini-Circuits' applicable established test performance criteria and measurement instructions. 3. The parts covered by this specification sheet are subject to Mini-Circuits standard limited warranty and terms and conditions (collectively, "Standard Terms"); Purchasers of this part are entitled to the rights and benefits contained therein. For a full statement of the Standard Terms and the exclusive rights and remedies thereunder, please visit Mini-Circuits' website at www.minicircuits.com/MCLStore/terms.jsp.

REV. A
M111708
BLP-10.7-75
090818