

Coaxial High Pass Filter

BHP-300+ BHP-300

50Ω 290 to 3000 MHz

Maximum Ratings

Operating Temperature	-55°C to 100°C
Storage Temperature	-55°C to 100°C
RF Power Input	0.5W max.

Permanent damage may occur if any of these limits are exceeded.

Features

- rugged shielded case
- other standard and custom BHP models available with wide selection of fco

Applications

- lab use
- transmitters/receivers
- radio communications



CASE STYLE: FF55

Connectors	Model	Price	Qty.
BNC	BHP-300(+)	\$36.95 ea.	(1-9)

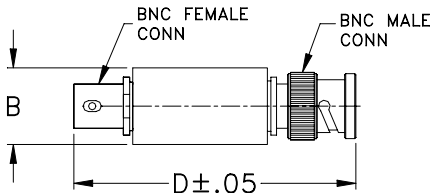
+ RoHS compliant in accordance with EU Directive (2002/95/EC)

The +Suffix identifies RoHS Compliance. See our web site for RoHS Compliance methodologies and qualifications.

High Pass Filter Electrical Specifications

STOPBAND (MHz)	fco (MHz) Nom.	PASSBAND (MHz)	VSWR (:1)	
			Stopband Typ.	Passband Typ.
(loss > 40 dB)	(loss > 20 dB)	(loss < 1.5 dB)	17	1.7
DC-145	145-190	290-3000		

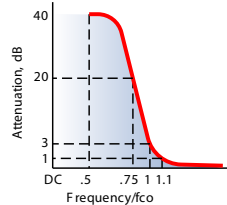
Outline Drawing



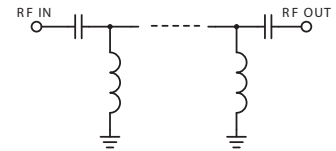
Outline Dimensions (inch/mm)

B	D	wt
.54	2.59	grams
13.72	65.79	40.0

typical frequency response

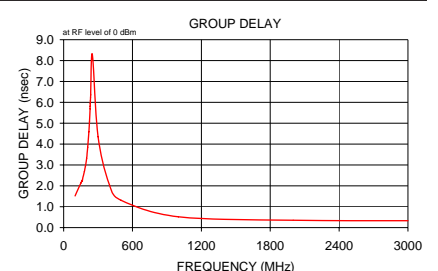
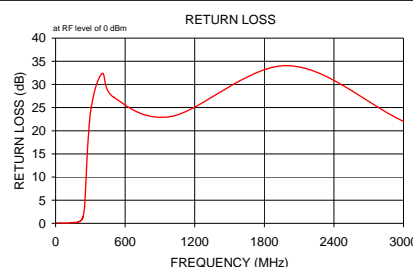
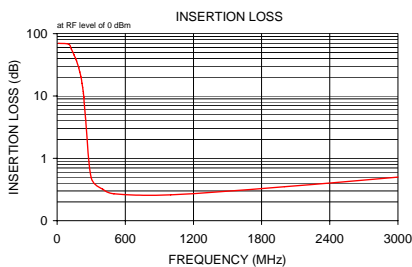


electrical schematic



Typical Performance Data

Frequency (MHz)	Insertion Loss (dB)	Return Loss (dB)	Frequency (MHz)	Group Delay (nsec)
	\bar{x}			
10.00	70.05	4.53	100.00	1.52
100.00	67.77	0.48	125.00	1.84
125.00	56.38	0.52	150.00	2.14
150.00	45.47	0.61	159.00	2.24
159.00	41.59	0.66	160.00	2.25
160.00	41.15	0.66	161.00	2.24
162.00	40.29	0.67	162.00	2.25
163.00	39.86	0.67	163.00	2.28
164.00	39.43	0.67	164.00	2.29
170.00	36.88	0.71	170.00	2.45
180.00	32.65	0.77	180.00	2.69
190.00	28.46	0.84	190.00	2.94
200.00	24.28	0.90	200.00	3.32
210.00	20.10	0.98	210.00	3.84
220.00	15.91	1.05	220.00	4.59
225.00	13.82	1.08	225.00	5.09
230.00	11.75	1.10	230.00	5.69
231.00	11.35	1.11	231.00	5.81
232.00	10.94	1.11	232.00	5.94
233.00	10.53	1.11	233.00	6.08
234.00	10.13	1.10	234.00	6.22
235.00	9.74	1.10	235.00	6.36
236.00	9.34	1.10	236.00	6.50
250.00	4.46	0.85	250.00	8.29
300.00	0.49	0.02	238.84	4.35
400.00	0.32	0.03	32.34	2.02
500.00	0.27	0.03	27.26	1.31
1000.00	0.26	0.01	23.11	0.52
2000.00	0.35	0.01	34.07	0.35
3000.00	0.50	0.01	22.01	0.33



Mini-Circuits®
ISO 9001 ISO 14001 AS 9100 CERTIFIED

P.O. Box 350166, Brooklyn, New York 11235-0003 (718) 934-4500 Fax (718) 332-4661 The Design Engineers Search Engine Provides ACTUAL Data Instantly at minicircuits.com

IF/RF MICROWAVE COMPONENTS

For detailed performance specs & shopping online see web site

Notes: 1. Performance and quality attributes and conditions not expressly stated in this specification sheet are intended to be excluded and do not form a part of this specification sheet. 2. Electrical specifications and performance data contained herein are based on Mini-Circuits' applicable established test performance criteria and measurement instructions. 3. The parts covered by this specification sheet are subject to Mini-Circuits' standard limited warranty and terms and conditions (collectively, "Standard Terms"); Purchasers of this part are entitled to the rights and benefits contained therein. For a full statement of the Standard Terms and the exclusive rights and remedies thereunder, please visit Mini-Circuits' website at www.minicircuits.com/MCLStore/terms.jsp.

REV. C
M108326
BHP-300
090818