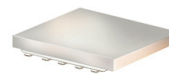


High Power Bi-Directional Coupler

BDCA1-6-22+

50Ω 6dB Coupling DC Pass 950 to 2200 MHz



Maximum Ratings

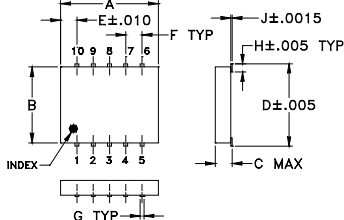
Operating Temperature	-55°C to 100°C
Storage Temperature	-55°C to 100°C
DC Current	0.25A

Permanent damage may occur if any of these limits are exceeded.

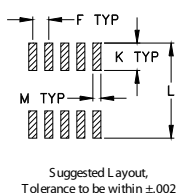
Pin Connections

INPUT	1
OUTPUT	6
COUPLED (forward)	10
COUPLED (reverse)	5
GROUND	2,3,4,7,8,9

Outline Drawing



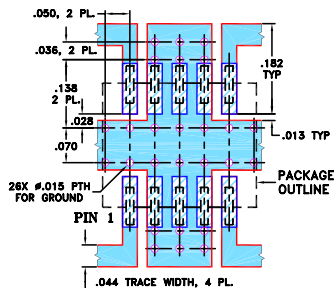
PCB Land Pattern



Outline Dimensions (inch/mm)

A	B	C	D	E	F	G
.30	.250	.052	.266	.050	.050	.012
7.62	6.35	1.32	6.76	1.27	1.27	0.30
H	J	K	L	M	wt	
.029	.004	.085	.296	.030	grams	
0.74	0.10	2.16	7.52	0.76	0.25	

Demo Board MCL P/N: TB-115+ Suggested PCB Layout (PL-004)



- NOTE: 1. TRACE WIDTH IS SHOWN FOR ROGERS RO4350B WITH DIELECTRIC THICKNESS .020 ± .0015; COPPER: 1/2 OZ. EACH SIDE. FOR OTHER MATERIALS TRACE WIDTH MAY NEED TO BE MODIFIED.
2. BOTTOM SIDE OF THE PCB IS CONTINUOUS GROUND PLANE.
■ DENOTES PCB COPPER LAYOUT WITH SMOBC (SOLDER MASK OVER BARE COPPER)
■ DENOTES COPPER LAND PATTERN FREE OF SOLDER MASK

Features

- wideband, 950 to 2200 MHz
- excellent VSWR 1.15:1 typ.
- excellent power handling capability, 44W (1900 MHz)
- hermetically sealed
- low temperature variation
- protected by US Patent 7,049,905
- DC current through input to output 0.25A Max. at 1.0 watt RF input power.

Applications

- DCS, PCS
- mobile satellite

CASE STYLE: DZ944

PRICE: \$3.95 ea. QTY (10-49)

+ RoHS compliant in accordance with EU Directive (2002/95/EC)

The +Suffix has been added in order to identify RoHS Compliance. See our web site for RoHS Compliance methodologies and qualifications.

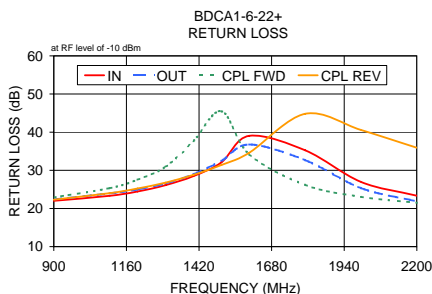
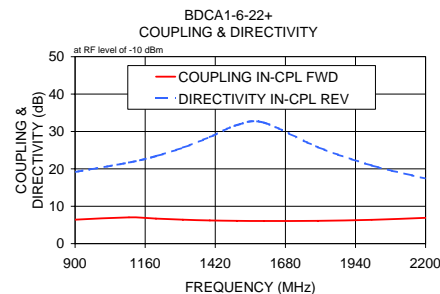
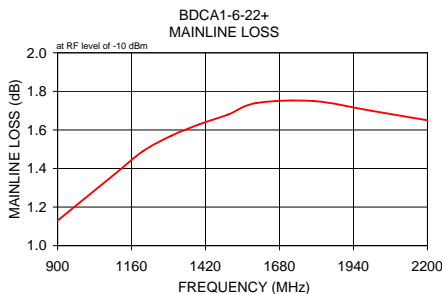
Bi-Directional Coupler Electrical Specifications

FREQUENCY (MHz)	COUPLING (dB)		MAINLINE LOSS ¹ (dB)		DIRECTIVITY (dB)		VSWR (:1)	POWER INPUT ² (W)
	Nom.	Max. Flatness	Typ.	Max.	Typ.	Min.		
950-2200								
950-1400	6.9±1.0	±1.0	1.4	1.9	23	17	1.20	57
1400-1900	6.0±0.5	±0.3	1.7	2.1	28	20	1.10	44
1900-2200	6.5±0.7	±0.7	1.7	2.1	22	15	1.15	37

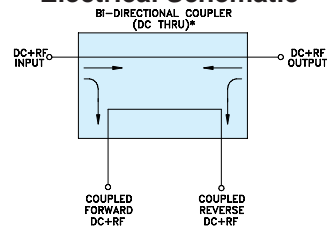
1. Includes theoretical coupled power loss of 1.25 dB at 6 dB coupling.
2. Derate linearly 1/3 at 100°C

Typical Performance Data

Frequency (MHz)	Mainline Loss (dB)		Coupling (dB)		Directivity (dB)		Return Loss (dB)		
	In-Out	In-Cpl Fwd	Out-Cpl Rev	Out-Cpl Fwd	In-Cpl Rev	In	Out	Cpl Fwd	Cpl Rev
900.00	1.13	6.41	7.97	18.73	19.16	22.02	22.37	22.89	22.31
1100.00	1.37	7.03	7.01	20.95	21.69	23.33	23.95	25.33	24.01
1200.00	1.49	6.70	6.69	22.51	23.40	24.45	24.99	27.54	25.24
1300.00	1.57	6.41	6.40	24.54	25.66	26.11	26.55	30.92	26.77
1400.00	1.63	6.21	6.19	27.42	28.52	28.50	28.97	37.66	28.82
1500.00	1.68	6.10	6.07	31.79	31.71	32.09	32.46	45.49	31.40
1600.00	1.74	6.05	6.00	41.94	32.37	39.04	36.77	34.19	34.60
1800.00	1.75	6.09	6.04	30.48	25.81	35.26	32.67	26.19	44.83
2000.00	1.70	6.36	6.31	23.05	20.91	26.95	25.34	23.04	40.59
2200.00	1.65	6.90	6.85	18.81	17.40	23.34	21.86	21.49	35.92



Electrical Schematic



* ELECTRICAL SCHEMATIC IS FOR BI-DIRECTIONAL COUPLER WITHOUT INTERNAL TRANSFORMERS AND RESISTORS.

For detailed performance specs & shopping online see web site

Mini-Circuits
ISO 9001 ISO 14001 AS 9100 CERTIFIED
IF/RF MICROWAVE COMPONENTS

P.O. Box 350166, Brooklyn, New York 11235-0003 (718) 934-4500 Fax (718) 332-4661 The Design Engineers Search Engine Provides ACTUAL Data Instantly at minicircuits.com

Notes: 1. Performance and quality attributes and conditions not expressly stated in this specification sheet are intended to be excluded and do not form a part of this specification sheet. 2. Electrical specifications and performance data contained herein are based on Mini-Circuit's applicable established test performance criteria and measurement instructions. 3. The parts covered by this specification sheet are subject to Mini-Circuits standard limited warranty and terms and conditions (collectively, "Standard Terms"); Purchasers of this part are entitled to the rights and benefits contained therein. For a full statement of the Standard Terms and the exclusive rights and remedies thereunder, please visit Mini-Circuits' website at www.minicircuits.com/MCLStore/terms.jsp.

REV. E
M119986
ED-10880/4
BDCA1-6-22+
LC/TD/CP/AM
090903