

# Bandpass Filter

## BBP-30+

50Ω Elliptic Response 27 to 33 MHz

### Maximum Ratings

Operating Temperature	-55°C to 100°C
Storage Temperature	-55°C to 100°C
RF Power Input	0.5W max.

### Features

- low insertion loss, 1.5 dB max.
- good selectivity, 1.76 typ. 20 dB/3dB BW ratio
- rugged shielded case

### Applications

- high rejection applications
- image rejection
- IF signal processing



CASE STYLE: FF55

Connectors	Model	Price	Qty.
BNC	BBP-30+	\$40.95 ea.	(1-9)

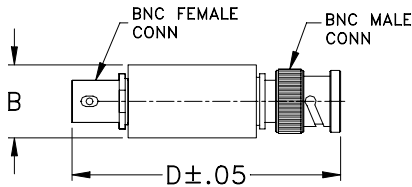
**+ RoHS compliant in accordance with EU Directive (2002/95/EC)**

The +Suffix has been added in order to identify RoHS Compliance. See our web site for RoHS Compliance methodologies and qualifications.

### Bandpass Filter Electrical Specifications

CENTER FREQ. (MHz)	PASSBAND (MHz) I.L. 1.5 dB Max.	3dB BANDWIDTH (MHz) Typ.	STOPBANDS		VSWR (:1)	
			(I. loss > 20 dB) at MHz	(I. loss > 35 dB) at MHz	Passband Max.	Stopband Typ.
30	27-33	25-35	22 & 40	3.2 & 99-1000	1.7	16

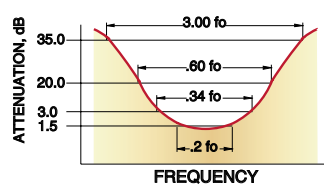
### Outline Drawing



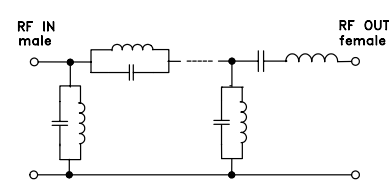
### Outline Dimensions (inch/mm)

B	D	wt
.54	2.59	grams
13.72	65.79	40.0

### typical frequency response

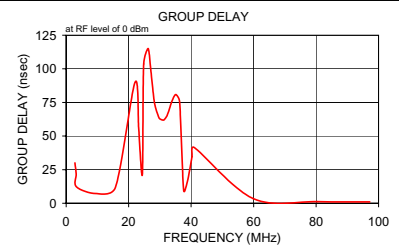
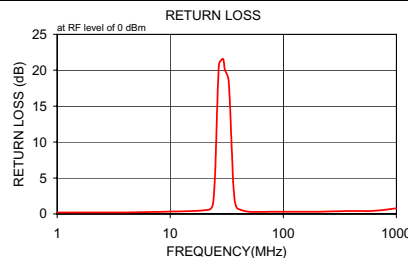
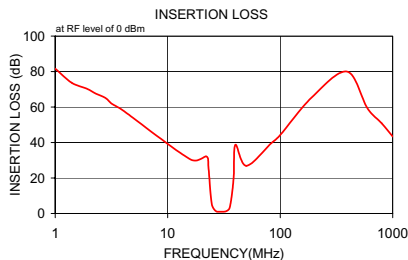


### electrical schematic



### Typical Performance Data

Frequency (MHz)	Insertion Loss (dB)		Return Loss (dB)	Frequency (MHz)	Group Delay (nsec)
	$\bar{x}$	$\sigma$			
1.0	81.68	9.6	0.2	2.8	30.059
1.4	73.69	2.1	0.2	3.2	21.884
1.9	70.39	1.8	0.2	3.3	12.226
2.3	67.50	1.2	0.2	9.6	7.216
2.8	65.09	0.9	0.2	15.8	11.923
3.2	61.70	1.3	0.2	22.0	89.768
4.0	58.09	0.6	0.2	23.2	56.479
16.0	30.42	0.6	0.4	23.6	40.798
22.0	32.26	2.3	0.6	24.4	22.806
23.0	26.30	1.7	0.8	24.8	103.619
23.7	15.68	1.1	1.2	26.2	115.164
24.3	8.44	1.0	2.5	27.1	99.025
25.0	3.86	0.6	6.3	28.0	78.962
27.0	1.28	0.1	20.8	28.5	72.223
29.3	1.02	0.1	21.6	29.5	64.660
30.5	1.02	0.1	20.0	30.0	62.760
32.8	1.16	0.1	18.6	31.1	61.836
35.0	2.37	0.3	8.8	31.6	62.724
36.0	4.69	0.5	4.5	32.2	64.652
37.3	11.24	0.9	1.7	32.7	67.765
38.7	21.64	1.2	0.9	33.9	76.095
40.0	38.75	2.0	0.7	35.1	80.917
50.0	26.83	0.5	0.3	36.3	75.838
82.7	39.42	0.4	0.3	37.6	9.558
99.0	43.92	0.6	0.3	38.9	16.978
190.0	65.36	2.3	0.3	40.3	34.601
392.5	80.00	3.9	0.4	41.0	41.413
595.0	59.40	2.2	0.4	59.9	3.448
797.5	50.83	1.8	0.6	80.4	1.230
1000.0	43.35	2.3	0.8	97.2	0.971



P.O. Box 350166, Brooklyn, New York 11235-0003 (718) 934-4500 Fax (718) 332-4661 For detailed performance specs & shopping online see Mini-Circuits web site



The Design Engineers Search Engine Provides ACTUAL Data Instantly From MINI-CIRCUITS At: [www.minicircuits.com](http://www.minicircuits.com)

RF/IF MICROWAVE COMPONENTS