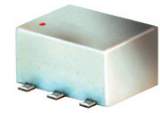


Surface Mount Power Splitter/Combiner

ADPQ-2-250+ ADPQ-2-250

2 Way-90° 50Ω 150 to 250 MHz



Maximum Ratings

Operating Temperature	-40°C to 85°C
Storage Temperature	-55°C to 100°C
Power Input (as a splitter)	1W max.

Permanent damage may occur if any of these limits are exceeded.

Pin Connections

SUM PORT	6
PORT 1 (0°)	4
PORT 2 (+90°)	1
GROUND	2,5
50 OHM TERM EXTERNAL	3

Features

- excellent amplitude unbalance, 0.7 dB typ. and phase unbalance, 0.4 dB typ.
- very low insertion loss, 0.2 dB typ.
- excellent VSWR, 1.15 typ.
- excellent isolation, 24 dB typ.
- aqueous washable
- protected under U.S. Patent 6,133,525

CASE STYLE: CD637
PRICE: \$9.95 ea. QTY (1-9)

+ RoHS compliant in accordance with EU Directive (2002/95/EC)

The +Suffix identifies RoHS Compliance. See our web site for RoHS Compliance methodologies and qualifications.

Applications

- VHF TV

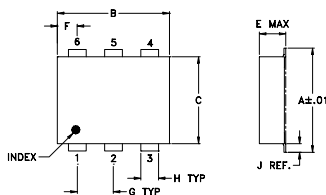
Electrical Specifications

FREQ. RANGE (MHz)	ISOLATION (dB)	INSERTION LOSS (dB) Avg. of Coupled Outputs less 3 dB	PHASE UNBALANCE (Degrees)	AMPLITUDE UNBALANCE (dB)
f_L - f_U	Typ. Min.	Typ. Max.	Max.	Max.
150-250	24 17	0.2 0.7	4	1.4

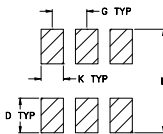
Typical Performance Data

Frequency (MHz)	Insertion Loss (dB)		Amplitude Unbalance (dB)	Isolation (dB)	Phase Unbalance (deg.)	VSWR S	VSWR 1	VSWR 2
	S-1	S-2						
150.00	2.81	3.53	0.72	24.70	89.44	1.13	1.13	1.14
160.00	2.99	3.34	0.34	24.75	89.48	1.14	1.14	1.14
170.00	3.16	3.17	0.01	24.79	89.58	1.14	1.14	1.15
180.00	3.31	3.06	0.25	24.79	89.62	1.14	1.14	1.15
190.00	3.44	2.95	0.49	24.74	89.74	1.15	1.15	1.16
200.00	3.54	2.88	0.67	24.60	89.87	1.15	1.15	1.17
208.00	3.62	2.83	0.78	24.40	90.01	1.16	1.15	1.17
212.00	3.65	2.81	0.83	24.30	90.10	1.16	1.16	1.18
216.00	3.67	2.80	0.87	24.15	90.14	1.16	1.16	1.18
220.00	3.69	2.79	0.90	23.97	90.18	1.16	1.16	1.18
232.00	3.73	2.79	0.94	23.35	90.48	1.17	1.17	1.20
240.00	3.74	2.80	0.94	22.79	90.76	1.18	1.18	1.21
244.00	3.74	2.82	0.92	22.46	90.91	1.19	1.18	1.22
248.00	3.73	2.84	0.89	22.12	91.04	1.19	1.19	1.22
252.00	3.73	2.88	0.85	21.75	91.22	1.20	1.19	1.23

Outline Drawing



PCB Land Pattern

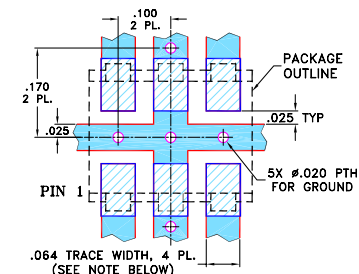


Suggested Layout,
Tolerance to be within ±.002

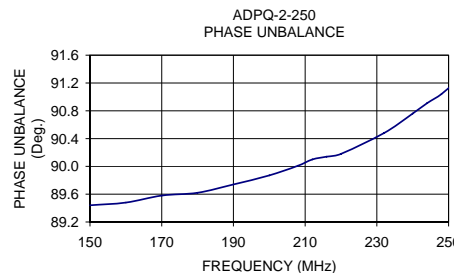
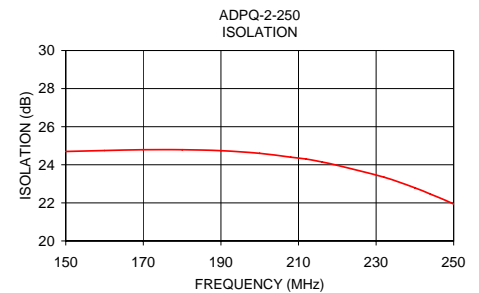
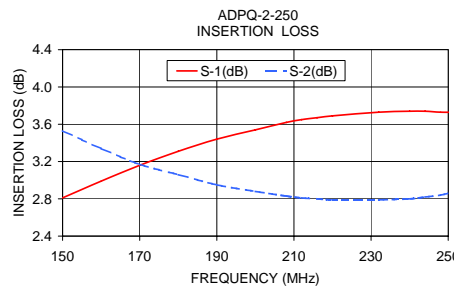
Outline Dimensions (inch/mm)

A	B	C	D	E	F	G
.272	.310	.220	.100	.206	.055	.100
6.91	7.87	5.59	2.54	5.23	1.40	2.54
H	J	K	L	wt		
.030	.026	.065	.300	grams		
0.76	0.66	1.65	7.62	0.40		

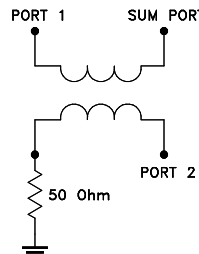
Demo Board MCL P/N: TB-211 Suggested PCB Layout (PL-097)



- NOTES: 1. TRACE WIDTH IS SHOWN FOR ROGERS R04350B WITH DIELECTRIC THICKNESS .030" ± .002"; COPPER: 1/2 OZ. EACH SIDE. FOR OTHER MATERIALS TRACE WIDTH MAY NEED TO BE MODIFIED.
2. BOTTOM SIDE OF THE PCB IS CONTINUOUS GROUND PLANE.
■ DENOTES PCB COPPER LAYOUT WITH SMOBC (SOLDER MASK OVER BARE COPPER)
□ DENOTES COPPER LAND PATTERN FREE OF SOLDER MASK



electrical schematic



For detailed performance specs & shopping online see web site



P.O. Box 350166, Brooklyn, New York 11235-0003 (718) 934-4500 Fax (718) 332-4661 The Design Engineers Search Engine Provides ACTUAL Data Instantly at minicircuits.com

Notes: 1. Performance and quality attributes and conditions not expressly stated in this specification sheet are intended to be excluded and do not form a part of this specification sheet. 2. Electrical specifications and performance data contained herein are based on Mini-Circuit's applicable established test performance criteria and measurement instructions. 3. The parts covered by this specification sheet are subject to Mini-Circuits standard limited warranty and terms and conditions (collectively, "Standard Terms"); Purchasers of this part are entitled to the rights and benefits contained therein. For a full statement of the Standard Terms and the exclusive rights and remedies thereunder, please visit Mini-Circuits' website at www.minicircuits.com/MCLStore/terms.jsp.

REV. C
M102713
ADPQ-2-250
ED-8187/1
LC/TD/CP
090824