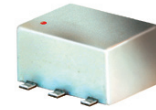


# Surface Mount Frequency Mixer

## ADE-1LH+ ADE-1LH

Level 10 (LO Power +10 dBm) 0.5 to 500 MHz



CASE STYLE: CD636  
PRICE: \$2.99 ea. QTY (10-49)

### Maximum Ratings

Operating Temperature	-40°C to 85°C
Storage Temperature	-55°C to 100°C
RF Power	50mW
IF Current	40mA
Permanent damage may occur if any of these limits are exceeded.	

### Pin Connections

LO	6
RF	3
IF	2
GROUND	1,4,5

### Features

- low conversion loss, 5.0 dB typ.
- excellent L-R isolation, 55 dB typ. and L-I isolation, 45 dB typ.
- good IP3, 15 dBm typ.
- aqueous washable
- protected by US Patent 6,133,525

### Applications

- VHF/UHF receivers

**+ RoHS compliant in accordance with EU Directive (2002/95/EC)**

The +Suffix identifies RoHS Compliance. See our web site for RoHS Compliance methodologies and qualifications.

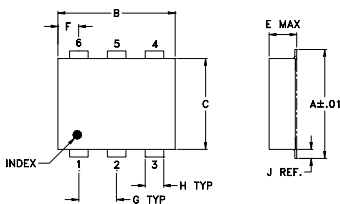
### Electrical Specifications

FREQUENCY (MHz)		CONVERSION LOSS (dB)				LO-RF ISOLATION (dB)						LO-IF ISOLATION (dB)						IP3 at center band (dBm)					
LO/RF	IF	Mid-Band		Total	L			M			U			L			M			U			Typ.
$f_L$ - $f_U$		$\bar{X}$	$\sigma$	Max.	Range	Max.	Typ.	Min.	Typ.	Min.	Typ.	Min.	Typ.	Min.	Typ.	Min.	Typ.	Min.	Typ.	Min.	Typ.	Min.	Typ.
0.5-500	DC-500	5.0	0.10	6.5	8.2	65	50	55	35	47	26	52	40	45	22	34	20						15

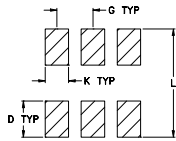
1 dB COMP.: +5 dBm typ.

L = low range [ $f_L$  to  $10 f_L$ ] M = mid range [ $10 f_L$  to  $f_U/2$ ] U = upper range [ $f_U/2$  to  $f_U$ ]  
m = mid band [ $2 f_L$  to  $f_U/2$ ]

### Outline Drawing



### PCB Land Pattern

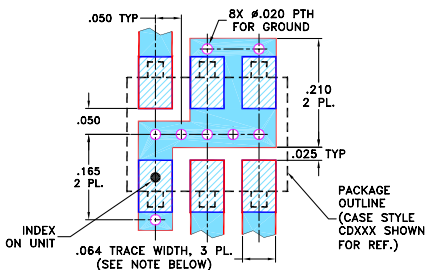


Suggested Layout, Tolerance to be within ±.002

### Outline Dimensions (inch/mm)

A	B	C	D	E	F	G	H	J	K	L	wt
.272	.310	.220	.100	.162	.055	.100	.030	.026	.065	.300	grams
6.91	7.87	5.59	2.54	4.11	1.40	2.54	0.76	0.66	1.65	7.62	0.25

### Demo Board MCL P/N: TB-03 Suggested PCB Layout (PL-052)

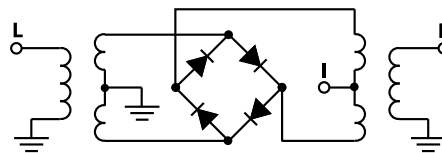


- NOTES: 1. TRACE WIDTH IS SHOWN FOR ROGERS RO4350B WITH DIELECTRIC THICKNESS .030" ± .002"; COPPER: 1/2 OZ. EACH SIDE. FOR OTHER MATERIALS TRACE WIDTH MAY NEED TO BE MODIFIED.  
2. BOTTOM SIDE OF THE PCB IS CONTINUOUS GROUND PLANE.
- DENOTES PCB COPPER LAYOUT WITH SMOBC (SOLDER MASK OVER BARE COPPER)
  - DENOTES COPPER LAND PATTERN FREE OF SOLDER MASK

### Typical Performance Data

Frequency (MHz)		Conversion Loss (dB)	Isolation L-R (dB)	Isolation L-I (dB)	VSWR RF Port (:1)	VSWR LO Port (:1)
RF	LO	LO +10dBm	LO +10dBm	LO +10dBm	LO +10dBm	LO +10dBm
0.50	30.50	5.87	67.00	52.50	1.54	2.56
0.80	30.80	5.68	66.83	52.17	1.37	2.56
1.00	31.00	5.70	67.01	52.00	1.33	2.61
5.00	35.00	5.21	65.67	50.33	1.23	2.61
10.00	40.00	5.08	64.17	50.17	1.22	2.67
50.00	80.00	5.30	59.16	43.84	1.15	2.56
71.52	101.52	5.27	57.66	42.17	1.13	2.61
100.00	130.00	5.31	56.51	40.51	1.12	2.62
142.94	172.94	5.47	55.83	38.33	1.16	2.67
150.00	180.00	5.48	55.34	38.00	1.16	2.61
200.00	230.00	5.49	52.67	37.50	1.14	2.73
214.36	244.36	5.48	52.01	37.34	1.13	2.73
250.00	280.00	5.54	51.34	36.67	1.08	2.56
285.79	315.79	5.76	46.84	34.51	1.09	2.67
300.00	330.00	5.85	45.83	33.67	1.09	2.67
350.00	380.00	5.67	48.00	30.67	1.14	2.56
400.00	430.00	5.74	47.01	27.33	1.16	2.86
428.63	458.63	6.00	46.66	27.00	1.12	2.80
470.00	500.00	6.30	48.34	27.67	1.06	3.01
500.00	530.00	6.61	44.33	27.33	1.10	2.93

### Electrical Schematic



**Mini-Circuits**  
ISO 9001 ISO 14001 AS 9100 CERTIFIED  
The Design Engineers Search Engine  
IF/RF MICROWAVE COMPONENTS

For detailed performance specs & shopping online see web site

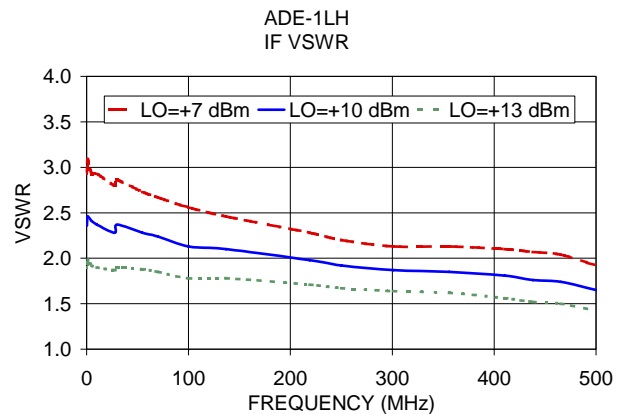
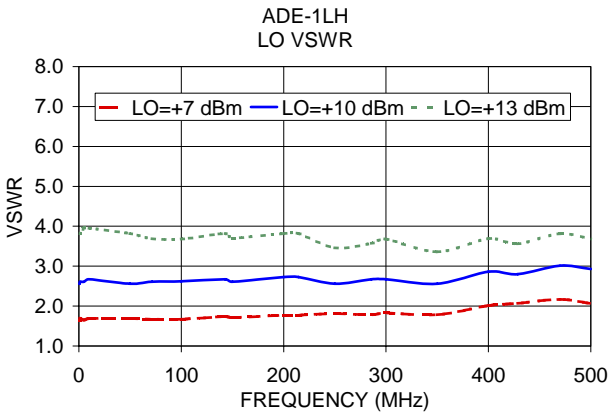
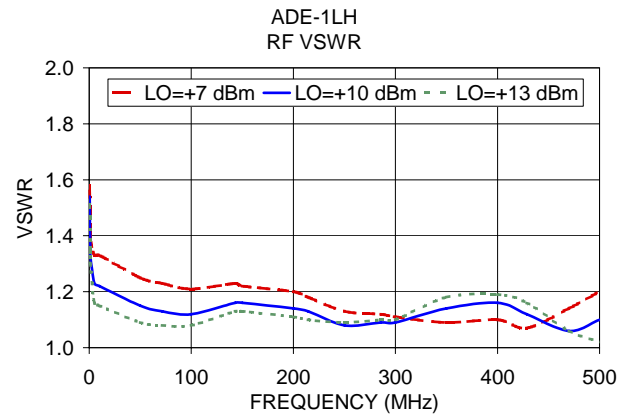
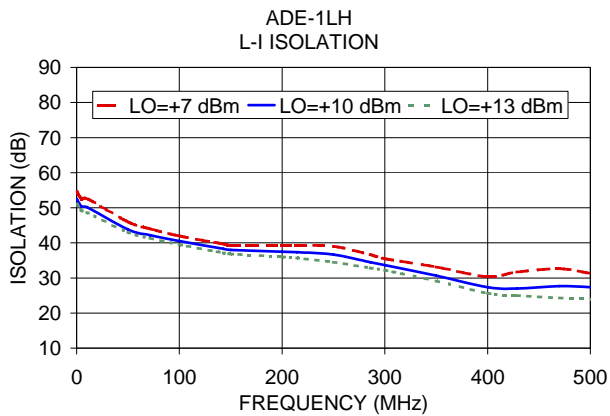
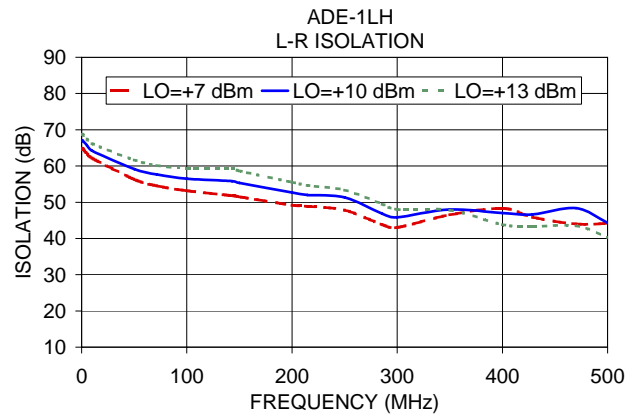
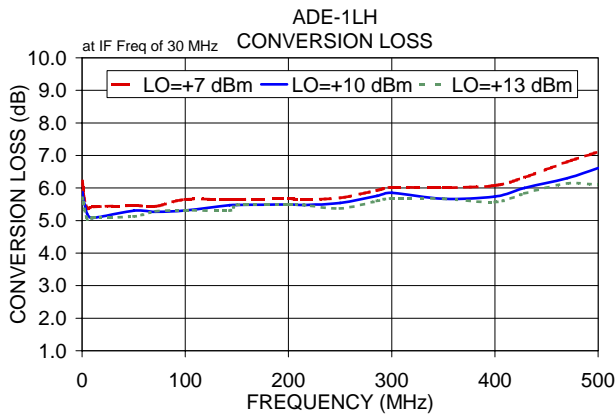
P.O. Box 350166, Brooklyn, New York 11235-0003 (718) 934-4500 Fax (718) 332-4661 The Design Engineers Search Engine Provides ACTUAL Data Instantly at [minicircuits.com](http://minicircuits.com)

Notes: 1. Performance and quality attributes and conditions not expressly stated in this specification sheet are intended to be excluded and do not form a part of this specification sheet. 2. Electrical specifications and performance data contained herein are based on Mini-Circuit's applicable established test performance criteria and measurement instructions. 3. The parts covered by this specification sheet are subject to Mini-Circuits standard limited warranty and terms and conditions (collectively, "Standard Terms"); Purchasers of this part are entitled to the rights and benefits contained therein. For a full statement of the Standard Terms and the exclusive rights and remedies thereunder, please visit Mini-Circuits' website at [www.minicircuits.com/MCLStore/terms.jsp](http://www.minicircuits.com/MCLStore/terms.jsp).

REV. C  
M102713  
ADE-1LH  
ED-7693/1  
WL/TD/CP/AM  
090917  
Page 1 of 2

# Performance Charts

# ADE-1LH+ ADE-1LH



For detailed performance specs & shopping online see web site

P.O. Box 350166, Brooklyn, New York 11235-0003 (718) 934-4500 Fax (718) 332-4661 The Design Engineers Search Engine Provides ACTUAL Data Instantly at [minicircuits.com](http://minicircuits.com)

IF/RF MICROWAVE COMPONENTS

**Notes:** 1. Performance and quality attributes and conditions not expressly stated in this specification sheet are intended to be excluded and do not form a part of this specification sheet. 2. Electrical specifications and performance data contained herein are based on Mini-Circuits' applicable established test performance criteria and measurement instructions. 3. The parts covered by this specification sheet are subject to Mini-Circuits standard limited warranty and terms and conditions (collectively, "Standard Terms"); Purchasers of this part are entitled to the rights and benefits contained therein. For a full statement of the Standard Terms and the exclusive rights and remedies thereunder, please visit Mini-Circuits' website at [www.minicircuits.com/MCLStore/terms.jsp](http://www.minicircuits.com/MCLStore/terms.jsp).