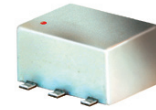


Surface Mount Frequency Mixer

ADE-10MH+ ADE-10MH

Level 13 (LO Power +13 dBm) 800 to 1000 MHz



CASE STYLE: CD636
PRICE: \$6.95 ea. QTY (10-49)

**+ RoHS compliant in accordance
with EU Directive (2002/95/EC)**

The +Suffix identifies RoHS Compliance. See our web site
for RoHS Compliance methodologies and qualifications.

Maximum Ratings

Operating Temperature	-40°C to 85°C
Storage Temperature	-55°C to 100°C
RF Power	200mW
IF Current	40mA
Permanent damage may occur if any of these limits are exceeded.	

Pin Connections

LO	6
RF	3
IF	2
GROUND	1,4,5

Features

- low conversion loss, 7.0 dB typ.
- excellent L-R isolation, 34 dB typ.
- excellent L-I isolation, 29 dB typ.
- high IP3, 26 dBm typ.
- aqueous washable
- protected by U.S. Patent 6,133,525

Applications

- GSM

Electrical Specifications

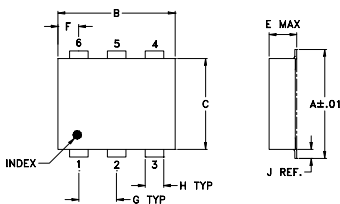
FREQUENCY (MHz)		CONVERSION LOSS (dB)			LO-RF ISOLATION (dB)		LO-IF ISOLATION (dB)		IP3 at center band (dBm)
LO/RF	IF	\bar{X}	σ	Max.	Typ.	Min.	Typ.	Min.	Typ.
800-1000	10-200	7.0	0.20	8.5	34	20	29	20	26

1 dB COMP.: +9 dBm typ.

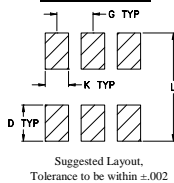
Typical Performance Data

Frequency (MHz)		Conversion Loss (dB)	Isolation L-R (dB)	Isolation L-I (dB)	VSWR RF Port (:1)	VSWR LO Port (:1)
RF	LO	LO +13dBm	LO +13dBm	LO +13dBm	LO +13dBm	LO +13dBm
800.00	830.00	6.96	37.49	27.09	1.66	1.29
810.00	840.00	6.94	37.54	27.08	1.68	1.30
820.00	850.00	6.91	37.55	27.04	1.70	1.31
830.00	860.00	6.91	37.57	27.06	1.71	1.31
840.00	870.00	6.85	37.58	27.07	1.71	1.31
850.00	880.00	6.87	37.54	27.04	1.72	1.31
860.00	890.00	6.90	37.55	27.10	1.71	1.30
880.00	910.00	6.77	37.54	27.17	1.74	1.29
890.00	920.00	6.83	37.52	27.26	1.75	1.29
900.00	930.00	6.95	37.49	27.34	1.76	1.29
910.00	940.00	6.99	37.42	27.37	1.77	1.30
920.00	950.00	6.88	37.30	27.41	1.78	1.30
930.00	960.00	6.78	37.22	27.44	1.77	1.30
940.00	970.00	6.79	37.06	27.45	1.77	1.29
950.00	980.00	6.84	36.95	27.47	1.77	1.29
960.00	990.00	6.87	36.90	27.53	1.79	1.28
970.00	1000.00	6.90	36.76	27.54	1.81	1.28
980.00	1010.00	6.90	36.67	27.61	1.82	1.28
990.00	1020.00	6.87	36.58	27.65	1.82	1.28
1000.00	1030.00	6.80	36.50	27.72	1.82	1.29

Outline Drawing



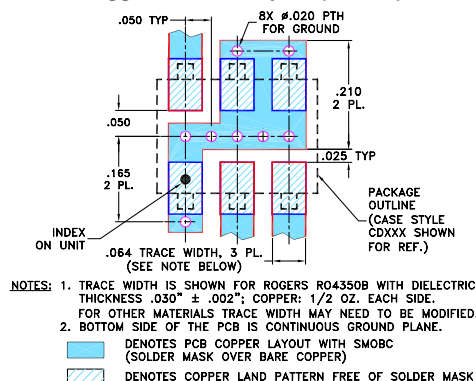
PCB Land Pattern



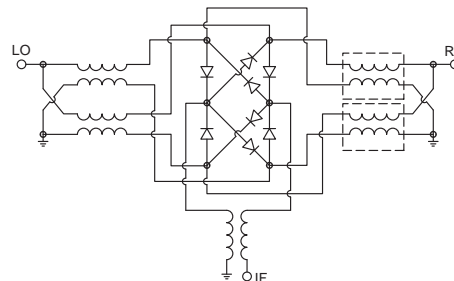
Outline Dimensions (inch/mm)

A	B	C	D	E	F	G
.272	.310	.220	.100	.162	.055	.100
6.91	7.87	5.59	2.54	4.11	1.40	2.54
H	J	K	L	wt		
.030	.026	.065	.300	grams		
0.76	0.66	1.65	7.62	0.25		

Demo Board MCL P/N: TB-03 Suggested PCB Layout (PL-052)



Electrical Schematic



Mini-Circuits
ISO 9001 ISO 14001 AS 9100 CERTIFIED
P.O. Box 350166, Brooklyn, New York 11235-0003 (718) 934-4500 Fax (718) 332-4661 The Design Engineers Search Engine
IF/RF MICROWAVE COMPONENTS

For detailed performance specs
& shopping online see web site

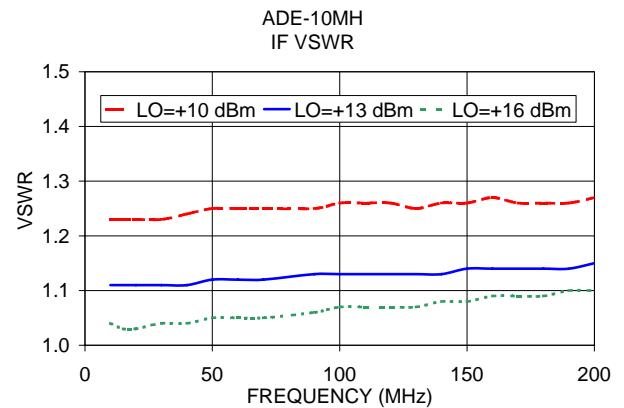
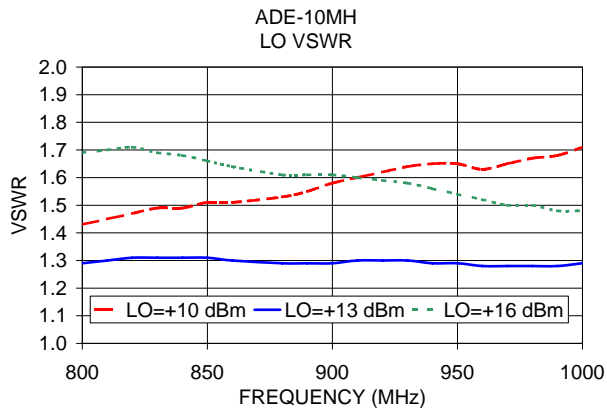
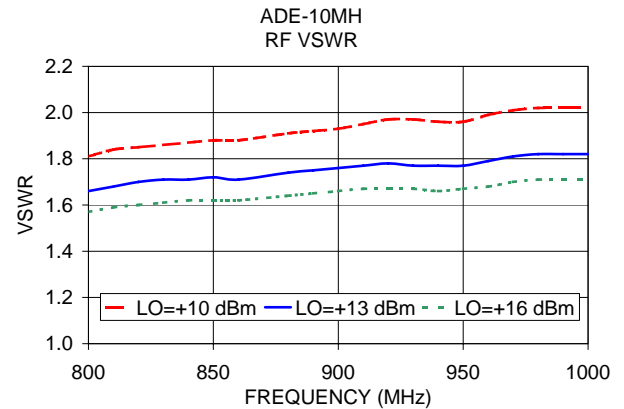
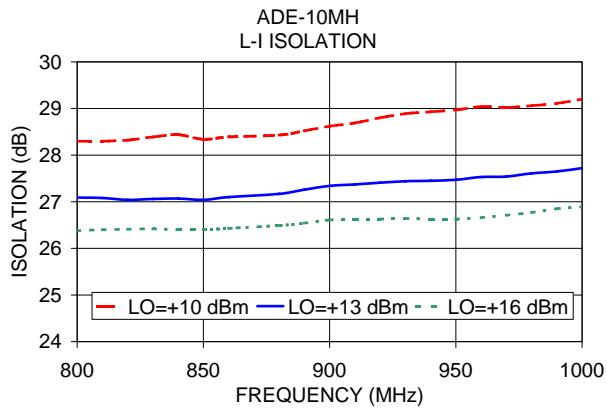
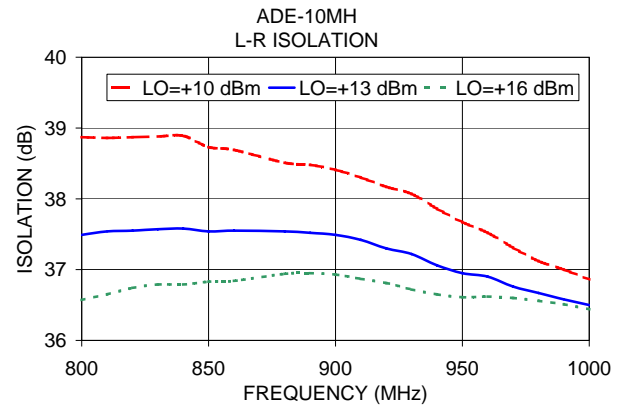
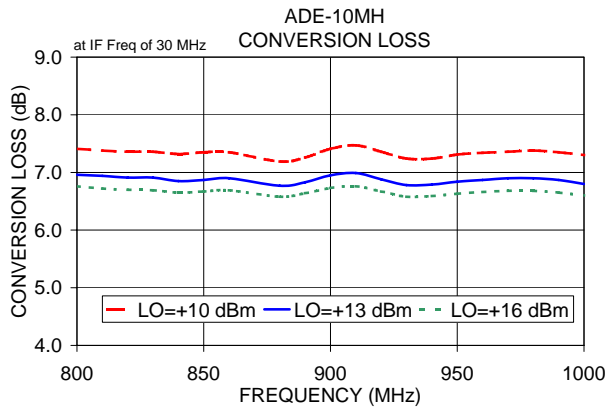
Provides ACTUAL Data Instantly at minicircuits.com

Notes: 1. Performance and quality attributes and conditions not expressly stated in this specification sheet are intended to be excluded and do not form a part of this specification sheet. 2. Electrical specifications and performance data contained herein are based on Mini-Circuit's applicable established test performance criteria and measurement instructions. 3. The parts covered by this specification sheet are subject to Mini-Circuits standard limited warranty and terms and conditions (collectively, "Standard Terms"); Purchasers of this part are entitled to the rights and benefits contained therein. For a full statement of the Standard Terms and the exclusive rights and remedies thereunder, please visit Mini-Circuits' website at www.minicircuits.com/MCLStore/terms.jsp.

REV. C
M102713
ADE-10MH
ED-8276/2
DJ/TD/CP/AM
090917
Page 1 of 2

Performance Charts

ADE-10MH+ ADE-10MH



For detailed performance specs & shopping online see web site

P.O. Box 350166, Brooklyn, New York 11235-0003 (718) 934-4500 Fax (718) 332-4661 The Design Engineers Search Engine Provides ACTUAL Data Instantly at minicircuits.com

IF/RF MICROWAVE COMPONENTS

Notes: 1. Performance and quality attributes and conditions not expressly stated in this specification sheet are intended to be excluded and do not form a part of this specification sheet. 2. Electrical specifications and performance data contained herein are based on Mini-Circuit's applicable established test performance criteria and measurement instructions. 3. The parts covered by this specification sheet are subject to Mini-Circuits standard limited warranty and terms and conditions (collectively, "Standard Terms"); Purchasers of this part are entitled to the rights and benefits contained therein. For a full statement of the Standard Terms and the exclusive rights and remedies thereunder, please visit Mini-Circuits' website at www.minicircuits.com/MCLStore/terms.jsp.