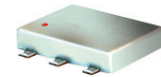


Surface Mount Directional Coupler

ADC-18-4-75+ ADC-18-4-75

75Ω 20 to 1000 MHz



Maximum Ratings

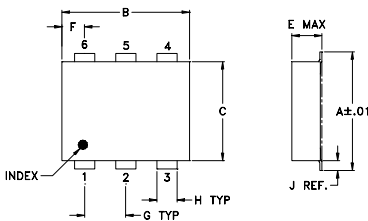
Operating Temperature	-40°C to 85°C
Storage Temperature	-55°C to 100°C

Permanent damage may occur if any of these limits are exceeded.

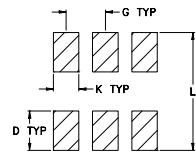
Pin Connections

INPUT	1
OUTPUT	6
COUPLED	3
GROUND	2
75Ω TERM EXTERNAL	4
ISOLATE (DO NOT USE)	5

Outline Drawing



PCB Land Pattern



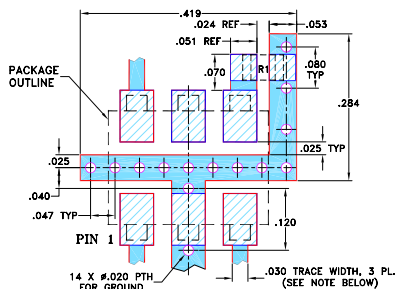
Suggested Layout,
Tolerance to be within ±.002

Outline Dimensions (inch/mm)

A	B	C	D	E	F	G
.272	.310	.220	.100	.112	.055	.100
6.91	7.87	5.59	2.54	2.84	1.40	2.54

H	J	K	L	wt
.030	.026	.065	.300	grams
0.76	0.66	1.65	7.62	0.20

Demo Board MCL P/N: TB-08 Suggested PCB Layout (PL-042)



- RESISTOR R1: 75 Ohm, 0805 SIZE.
- TRACE WIDTH IS SHOWN FOR ROGERS RO4350B WITH DIELECTRIC THICKNESS .030" ± .002"; COPPER: 1/2 OZ. EACH SIDE. FOR OTHER MATERIALS TRACE WIDTH MAY NEED TO BE MODIFIED.
 - BOTTOM SIDE OF THE PCB IS CONTINUOUS GROUND PLANE.
 - Denotes PCB COPPER LAYOUT WITH SMOBC (SOLDER MASK OVER BARE COPPER)
 - Denotes COPPER LAND PATTERN FREE OF SOLDER MASK

Features

- wideband, 20-1000 MHz
- low mainline loss, 0.4 dB typ.
- good directivity, 18 dB typ.
- excellent coupling flatness, ±0.15 dB typ.
- aqueous washable
- protected by U.S. Patents 6,133,525 & 6,140,887

Applications

- cable tv
- communications

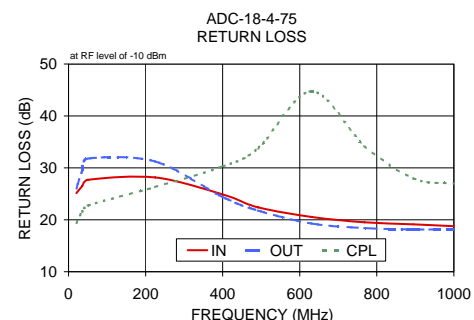
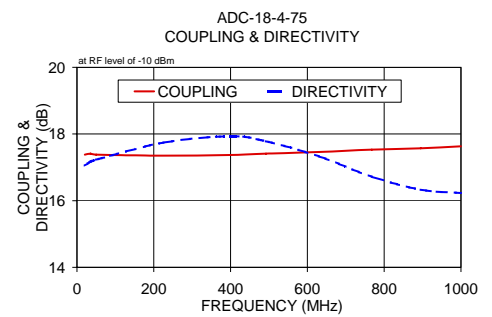
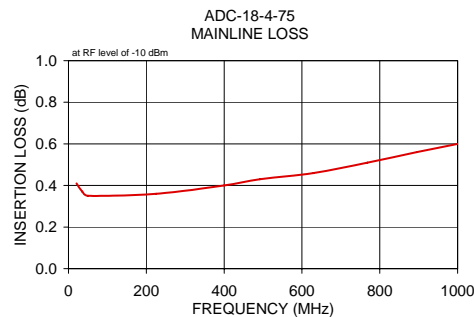
Directional Coupler Electrical Specifications

FREQ. (MHz)	COUPLING (dB)		MAINLINE LOSS ¹ (dB)			DIRECTIVITY (dB)			VSWR (:1)	POWER INPUT, W							
	Nom.	Flatness	L Typ.	M Typ.	U Typ.	L Typ.	M Typ.	U Typ.		Typ.	L Max.	MU Max.					
20-1000	17.4±0.5	±0.5	0.4	0.8	0.4	1.0	0.5	1.2	17	14	18	14	17	12	1.15	1.0	1.0

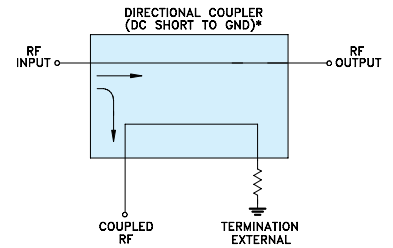
L= 20-200 MHz M= 200-500 MHz U= 500-1000 MHz
1. Mainline loss includes theoretical power loss at coupled port.

Typical Performance Data

Frequency (MHz)	Mainline Loss (dB)		Coupling (dB) In-Cpl	Directivity (dB)		Return Loss (dB)	
	In-Out			In	Out	Out	Cpl
20.60	0.41		17.38	17.05	25.15	26.01	19.37
35.30	0.37		17.41	17.17	26.48	29.41	21.55
50.00	0.35		17.38	17.23	27.69	31.77	22.76
225.00	0.36		17.35	17.74	28.16	31.23	26.30
400.00	0.40		17.37	17.93	24.88	24.39	30.25
492.00	0.43		17.41	17.78	22.40	21.78	33.74
630.00	0.46		17.46	17.33	20.56	19.28	44.74
768.00	0.51		17.53	16.72	19.50	18.43	34.24
895.00	0.56		17.57	16.33	19.13	18.15	27.95
1000.00	0.60		17.63	16.23	18.76	18.16	26.97



Electrical Schematic



* ELECTRICAL SCHEMATIC IS FOR DIRECTIONAL COUPLER WITH INTERNAL TRANSFORMER(S) AND EXTERNAL TERMINATION.

For detailed performance specs & shipping online see web site

Mini-Circuits
ISO 9001 ISO 14001 AS 9100 CERTIFIED
IF/RF MICROWAVE COMPONENTS

P.O. Box 350166, Brooklyn, New York 11235-0003 (718) 934-4500 Fax (718) 332-4661 The Design Engineers Search Engine Provides ACTUAL Data Instantly at minicircuits.com

Notes: 1. Performance and quality attributes and conditions not expressly stated in this specification sheet are intended to be excluded and do not form a part of this specification sheet. 2. Electrical specifications and performance data contained herein are based on Mini-Circuit's applicable established test performance criteria and measurement instructions. 3. The parts covered by this specification sheet are subject to Mini-Circuits standard limited warranty and terms and conditions (collectively, "Standard Terms"); Purchasers of this part are entitled to the rights and benefits contained therein. For a full statement of the Standard Terms and the exclusive rights and remedies thereunder, please visit Mini-Circuits' website at www.minicircuits.com/MCLStore/terms.jsp.

REV. D
M119986
ED-6814/1
ADC-18-4-75
WZ/TD/CP/AM
090903