

Surface Mount Directional Coupler

ADC-17-122-75+

75Ω 17dB 5 to 1250 MHz

The Big Deal

- Covers DOCSIS® 3.1 Bandwidth Requirements
- Low mainline loss, 0.8 dB
- Excellent coupling flatness, ±0.4 dB up to 1000 MHz
- Good VSWR: 1.15:1



CASE STYLE: CD542

Product Overview

Mini-Circuits' ADC-17-122-75+ is a 75Ω surface-mount directional coupler providing 17 dB coupling from 5 to 1250 MHz, supporting bandwidth requirements for DOCSIS 3.1 systems and equipment. This model, provides excellent coupling flatness, low mainline loss, good VSWR and RF input power handling up to 1W. The unit comes housed in a miniature 6-lead plastic package (0.27 x 0.31 x 0.22"), saving space in dense PCB layouts.

Key Features

Feature	Advantages
Wideband, 5 to 1250 MHz	The ADC-17-122-75+ supports a variety of 75Ω applications, including DOCSIS 3.1 compliant systems.
Good coupling flatness, ±0.4 dB up to 1000 MHz	Provides consistent coupling performance across frequency.
High power handling, 1W	Usable in systems with a wide range of high-power requirements.
Low mainline loss, 0.8 dB	Provides excellent through-path signal power transmission.
Small size, 0.27 x 0.31 x 0.22"	Provides high power capability while saving space in systems with tight layouts.

Surface Mount Directional Coupler

75Ω 17dB 5 to 1250 MHz

ADC-17-122-75+



CASE STYLE: CD542

Features

- wideband, 5-1250 MHz
- low mainline loss, 0.8 dB typ.
- good VSWR, 1.15:1 typ.
- excellent coupling flatness, ± 0.4 dB typ. up to 1000 MHz
- aqueous washable
- protected by U.S. Patents 6,133,525 & 6,140,887

Applications

- cable tv
- cellular
- DOCSIS 3.1 system
- VHF/UHF

+RoHS Compliant

The +Suffix identifies RoHS Compliance. See our web site for RoHS Compliance methodologies and qualifications



Available Tape and Reel at no extra cost

Reel Size	Devices/Reel
7"	20, 50, 100, 200, 500
13"	500, 1000

Electrical Specifications at 25°C

Parameter	Condition (MHz)	Min.	Typ.	Max.	Unit
Frequency Range		5		1250	MHz
Mainline Loss ¹	5 - 1000 1000 - 1250	—	0.8 1.0	1.2 1.4	dB
Coupling	5 - 1250	—	17 \pm 0.5	—	dB
Coupling Flatness (\pm)	5 - 1000 5 - 1250	—	0.4 0.6	0.9 1.0	dB
Isolation	5 - 50 50 - 870 870 - 1250	30 22 20	48 30 25	— — —	dB
Return Loss (Input)	5 - 1250	18	23	—	dB
Return Loss (Output)	5 - 1250	19	25	—	dB
Return Loss (Coupling)	5 - 1250	18	22	—	dB
Input Power	5 - 1250	—	—	1.0	W

1. Mainline loss includes theoretical power loss at coupled port.

Maximum Ratings

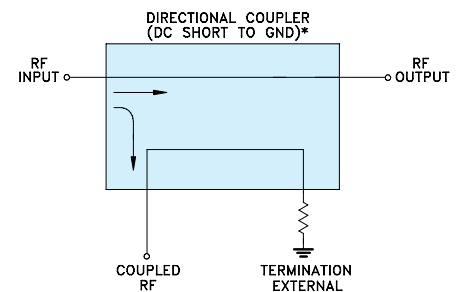
Parameter	Ratings
Operating Temperature	-40°C to 85°C
Storage Temperature	-55°C to 100°C

Permanent damage may occur if any of these limits are exceeded.

Pin Connections

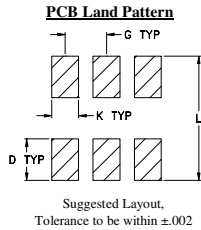
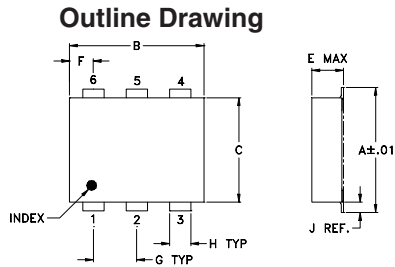
Function	Pin Number
INPUT	1
OUTPUT	6
COUPLED	3
GROUND	2
75Ω TERM EXTERNAL	4
ISOLATE (DO NOT USE)	5

Electrical Schematic



* ELECTRICAL SCHEMATIC IS FOR DIRECTIONAL COUPLER WITH INTERNAL TRANSFORMER(S) AND EXTERNAL TERMINATION.

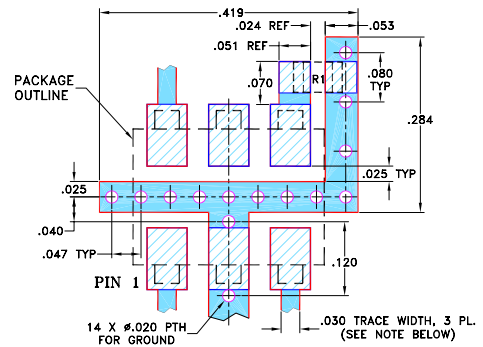




Outline Dimensions (inch/mm)

A	B	C	D	E	F	G
.272	.310	.220	.100	.112	.055	.100
6.91	7.87	5.59	2.54	2.84	1.40	2.54
H	J	K	L	wt		
.030	.026	.065	.300	grams		
0.76	0.66	1.65	7.62	0.20		

Demo Board MCL P/N: TB-08 Suggested PCB Layout (PL-042)

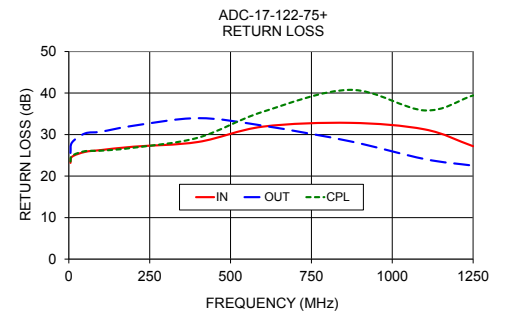
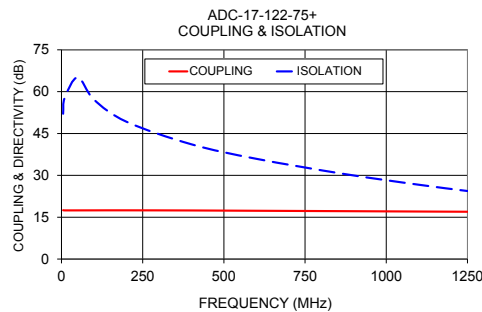
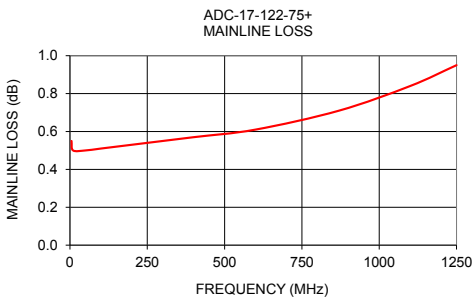


- RESISTOR R1: 75 Ohm, 0805 SIZE.
- NOTES: 1. TRACE WIDTH IS SHOWN FOR ROGERS RO4350B WITH DIELECTRIC THICKNESS $.030" \pm .002"$; COPPER: 1/2 OZ. EACH SIDE. FOR OTHER MATERIALS TRACE WIDTH MAY NEED TO BE MODIFIED.
2. BOTTOM SIDE OF THE PCB IS CONTINUOUS GROUND PLANE.

- DENOTES PCB COPPER LAYOUT WITH SMOBC (SOLDER MASK OVER BARE COPPER)
- DENOTES COPPER LAND PATTERN FREE OF SOLDER MASK

Typical Performance Data

Frequency (MHz)	Mainline Loss (dB) In-Out	Coupling (dB) In-Cpl	Isolation (dB)	Return Loss (dB)		
				In	Out	Cpl
5	0.55	17.51	52.07	23.18	25.57	23.52
10	0.50	17.45	57.83	24.67	28.11	24.90
50	0.50	17.45	65.11	25.82	30.27	26.00
100	0.51	17.46	57.14	26.27	30.69	26.12
200	0.53	17.47	49.22	27.08	32.13	26.83
400	0.57	17.42	41.13	28.22	33.95	29.26
600	0.61	17.31	35.93	31.91	32.14	35.49
870	0.71	17.17	30.50	32.82	28.37	40.77
1100	0.84	17.04	26.64	31.25	24.10	35.81
1250	0.95	16.96	24.39	27.19	22.51	39.42



Additional Notes

- A. Performance and quality attributes and conditions not expressly stated in this specification document are intended to be excluded and do not form a part of this specification document.
- B. Electrical specifications and performance data contained in this specification document are based on Mini-Circuit's applicable established test performance criteria and measurement instructions.
- C. The parts covered by this specification document are subject to Mini-Circuits standard limited warranty and terms and conditions (collectively, "Standard Terms"); Purchasers of this part are entitled to the rights and benefits contained therein. For a full statement of the Standard Terms and the exclusive rights and remedies thereunder, please visit Mini-Circuits' website at www.minicircuits.com/MCLStore/terms.jsp