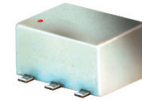


Directional Coupler

75Ω

5 to 1000 MHz

ADC-10-4-75R+



CASE STYLE: CD636
PRICE: \$7.95 ea. QTY (10-49)

+ RoHS compliant in accordance with EU Directive (2002/95/EC)

The +Suffix has been added in order to identify RoHS Compliance. See our web site for RoHS Compliance methodologies and qualifications.

Maximum Ratings

Operating Temperature	-40°C to 85°C
Storage Temperature	-55°C to 100°C

Permanent damage may occur if any of these limits are exceeded.

Pin Connections

INPUT	1
OUTPUT	6
COUPLED	3
GROUND	2,5
NOT USED	4

Features

- wideband, 5-1000 MHz
- good directivity, 20 dB typ.
- good VSWR, 1.2:1 typ.
- internal load, no external components required
- aqueous washable
- protected by US Patents 6,133,525 & 6,140,887

Applications

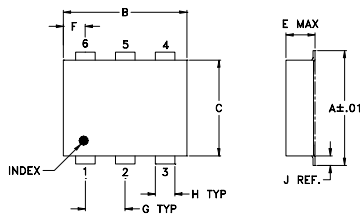
- CATV power tap

Directional Coupler Electrical Specifications

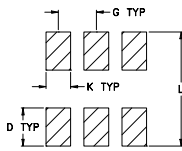
FREQ. (MHz)	COUPLING (dB)		MAINLINE LOSS ¹ (dB)			DIRECTIVITY (dB)			VSWR (:1)	POWER INPUT, W
	Nom.	Flatness	L	M	U	L	M	U		
f _L -f _U			Typ. Max.	Typ. Max.	Typ. Max.	Typ. Min.	Typ. Min.	Typ. Min.	Typ.	Max.
5-1000	9.6±0.5	±0.5	1.0 1.8	1.1 1.6	1.5 1.8	22 17	21 16	20 14	1.2	1.0

L= 5-50 MHz M= 50-500 MHz U= 500-1000 MHz
1. Mainline loss includes theoretical power loss at coupled port.

Outline Drawing



PCB Land Pattern

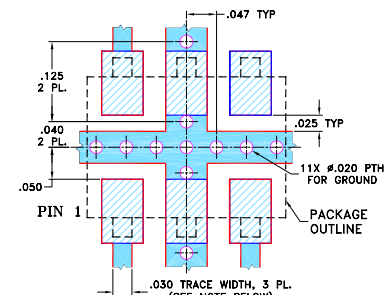


Suggested Layout, Tolerance to be within ±.002

Outline Dimensions (inch/mm)

A	B	C	D	E	F	G
.272	.310	.220	.100	.162	.055	.100
6.91	7.87	5.59	2.54	4.11	1.40	2.54
H	J	K	L	wt		
.030	.026	.065	.300	grams		
0.76	0.66	1.65	7.62	0.25		

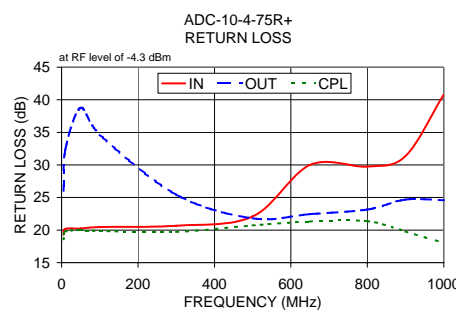
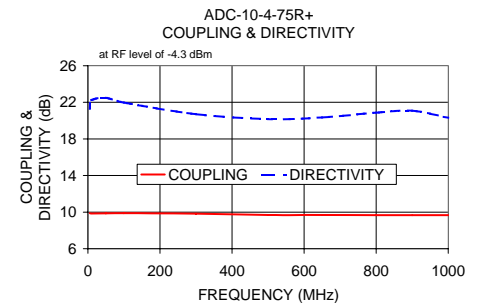
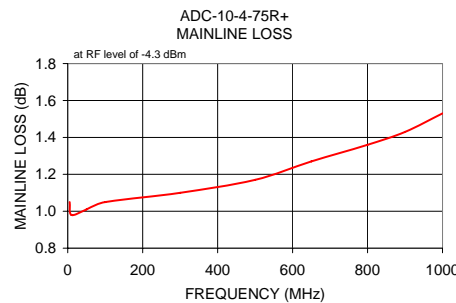
Demo Board MCL P/N: TB-356 Suggested PCB Layout (PL-213)



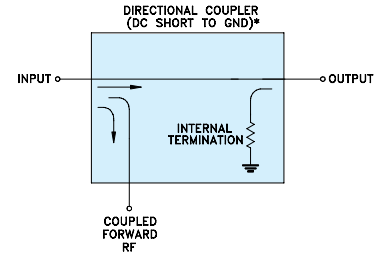
- NOTES: 1. TRACE WIDTH IS SHOWN FOR ROGERS RO4350B WITH DIELECTRIC THICKNESS .030" ± .002"; COPPER: 1/2 OZ. EACH SIDE. FOR OTHER MATERIALS TRACE WIDTH MAY NEED TO BE MODIFIED.
2. BOTTOM SIDE OF THE PCB IS CONTINUOUS GROUND PLANE.
3. DENOTES PCB COPPER LAYOUT WITH SMOBS (SOLDER MASK OVER BARE COPPER)
4. DENOTES COPPER LAND PATTERN FREE OF SOLDER MASK

Typical Performance Data

Frequency (MHz)	Mainline Loss (dB)		Coupling (dB)	Directivity (dB)	Return Loss (dB)		
	In-Out	In-Cpl			In	Out	Cpl
5.00	1.05	9.88	21.29	19.29	26.04	18.58	
10.00	0.98	9.85	22.23	20.18	32.36	19.76	
50.00	1.01	9.86	22.50	20.25	38.76	19.95	
100.00	1.05	9.88	21.97	20.46	34.63	19.87	
300.00	1.10	9.83	20.70	20.68	25.43	19.72	
500.00	1.17	9.69	20.16	22.10	21.80	20.73	
650.00	1.27	9.69	20.34	30.01	22.46	21.32	
800.00	1.36	9.67	20.86	29.75	23.14	21.37	
900.00	1.43	9.67	21.08	31.38	24.67	19.79	
1000.00	1.53	9.67	20.31	40.80	24.59	18.03	



Electrical Schematic



* ELECTRICAL SCHEMATIC IS FOR DIRECTIONAL COUPLER WITH INTERNAL TRANSFORMER(S) THAT ROUTES DC FROM RF PORTS TO GROUND.

For detailed performance specs & shipping online see web site



P.O. Box 350166, Brooklyn, New York 11235-0003 (718) 934-4500 Fax (718) 332-4661 The Design Engineers Search Engine Provides ACTUAL Data Instantly at minicircuits.com

Notes: 1. Performance and quality attributes and conditions not expressly stated in this specification sheet are intended to be excluded and do not form a part of this specification sheet. 2. Electrical specifications and performance data contained herein are based on Mini-Circuit's applicable established test performance criteria and measurement instructions. 3. The parts covered by this specification sheet are subject to Mini-Circuit's standard limited warranty and terms and conditions (collectively, "Standard Terms"); Purchasers of this part are entitled to the rights and benefits contained therein. For a full statement of the Standard Terms and the exclusive rights and remedies thereunder, please visit Mini-Circuit's website at www.minicircuits.com/MCLStore/terms.jsp.

REV. A
M119986
ED-12259/4
ADC-10-4-75R+
DY/LC/CP/AM
090903