

New Product Announcement!

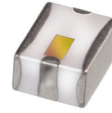
High Pass Filter

HFCV-145+

Release Date: July, 2009

The Big Deal:

- Small size 3.2mm x 2.5 mm
- High Power handling (8W)
- High rejection (20 dB typ)
- Ceramic construction



Pricing: **\$3.99** (QTY 10)

Product Overview:

New High Pass Filter HFCV-145+ is an LTCC based 7 section design, that extends the lower frequency cutoff range of the existing HFCN series to 145 MHz. Systems that previously relied on active or lumped element filtering to support these lower frequencies can save power and system complexity by integrating the HFCV-145+ into new designs. These filters are offered in a EIA 1210 package size and have a typical stop band rejection of 20 dB.

Summary Performance

Insertion Loss (Pass band)	1.5 dB Max.	145-1050 MHz
Return Loss (Pass band)	15 dB Typ.	145-1050 MHz
Stop band Rejection	15 dB Min.	115 MHz
Stop band Rejection	20 dB typ.	80 MHz

Key Features

Feature	Advantages
<i>Small Size (3.2mm x2.5 mm)</i>	Available in the size of typical resistors or capacitors (EIA 1210), the ultra small HFCV series integrates up to 7 low pass sections in a simple SMT chip form factor.
<i>High Power Handling</i>	The HFCV series can withstand up to 8W CW signal without damage making this filter ideal for use in medium power to transmit paths.
<i>Temperature Stability</i>	Over a 155°C operating temperature range (-55°C to +100°C), the HFCV series ceramic filters typically exhibit less than 0.2 dB pass band insertion loss variation.
<i>High Rejection</i>	Achieving 20dB rejection @80 MHz; the HFCV-145+ provides a versatile high pass configuration for many up converter applications.



P.O. Box 350166, Brooklyn, New York 11235-0003 (718) 934-4500 Fax (718) 332-4661 For detailed performance specs & shopping online see Mini-Circuits web site



The Design Engineers Search Engine Provides ACTUAL Data Instantly From MINI-CIRCUITS At: www.minicircuits.com

IF/RF MICROWAVE COMPONENTS

HFCV-145+
090729

Page 1 of 1